



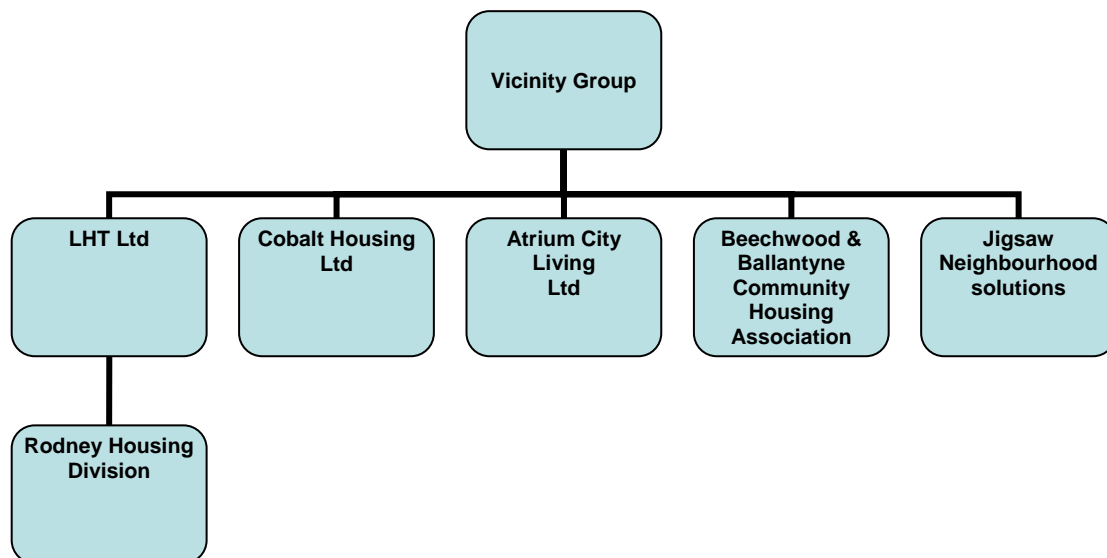
Liverpool Housing Trust (LHT) was founded in 1965. It was founded with the help of a £200 donation from Notting Hill Trust and to date the Trust has invested over £300 million into the region's housing stock.

Now with almost 16,000 homes in management and 450 staff, LHT has come a long way since it was formed on a shoestring budget by local Christian volunteers.

During 2002, a group structure was established with the creation of a parent company. In 2006, the Group became known as 'Vicinity Group Ltd'.

The Group and its subsidiaries are constantly working to improve homes, lives and neighbourhoods in Liverpool and the wider Merseyside region.

Corporate Structure



Vicinity Group

Vicinity Group offer a number of corporate services to its subsidiaries, such as Information Systems, Finance, Human Resources, Business Assurance and Marketing and PR.

LHT Ltd

LHT, established in 1965, has a proven track record as an excellent landlord, a provider of high quality services and a strong capability in relation to continuous improvement.

Rodney Housing Division

Rodney Housing Division was created by a Transfer of Engagements from Rodney Housing Association to LHT. Rodney Housing provides homes and services for the people of Merseyside. We offer homes at affordable rents, low cost ownership and leasehold for those in housing need, young people, older people, families and people with special needs.

Cobalt Housing Ltd

In February 2003 council tenants in North East Liverpool voted overwhelmingly to transfer to Cobalt and they are currently investing around £100m in the wholesale improvement of their 6,000 homes.

Beechwood & Ballantyne Community Housing Association

BBCHA are located on the Wirral and LHT has supported tenants on the Beechwood and Ballantyne estate to establish their own community based housing association - the first of its kind in the country.

Atrium City Living Ltd

Atrium generates additional income to support the groups social objectives through the sale and rent of high quality homes such as Kings Dock and Falkner Square

Jigsaw

Jigsaw Neighbourhood Solutions was set up as a Limited Company in April 2006 and focuses on working with residents to help tackle anti social behaviour, create employment and training opportunities and deliver clean safe well managed inclusive communities.

Vicinity Group has a high profile within the RSL sector, and a reputation locally for effective service delivery. We have a commitment to the City of Liverpool and continue to help shape and deliver housing policy both nationally and regionally.